

Upgrading the GI-4000 Software - 03/27/09



Required Connection

Connect the GI-4000 to your PC communication port using a DB9 male to DB9 female straight through RS-232 cable. **Do not** use a Null Modem cable. If your PC does not have a serial port, you can use a USB to Serial converter cable. Connect one end of the cable to the DB9 connector on your PC and the other end to the DB9 connector on the left side of the GI-4000. **Do not** attempt to use the USB port located on the GI-4000. Updating must be done using the RS-232 port (DB9 connector).

On the GI-4000

Turn the GI-4000 on while simultaneously pressing and holding down the **CANCEL** and **ENTER** keys. You will momentarily see black bars appear on the display, followed by the normal "Kobetron Inc. GI-4000 Gaming Investigator" screen. Continue to hold down the keys until the message shown below appears on the display;

A screenshot of the GI-4000's monochrome display. The text is rendered in a green, pixelated font on a black background. The message reads: "GI-4000 Reprogrammer", "v1.0d", "(c)2008 Kobetron Inc", and "←← Listening...".

```
GI-4000 Reprogrammer
v1.0d
(c)2008 Kobetron Inc
←← Listening...
```

On the PC

Unzip the update file you downloaded from our web page into a separate folder. Once unzipped, this folder should contain the following 4 files;

GI-4000 Version History Document: Describes what was done in each version.

Upgrading the GI-4000 Software: Procedure for updating your GI-4000 software.

Update.exe: Update Utility program.

GI4UPG.bin: Application update file.

Upgrading the GI-4000 Software - 03/27/09



After you have unzipped and verified all the files are present, Double click on the “Update.exe” file. This will open the update utility window shown below;



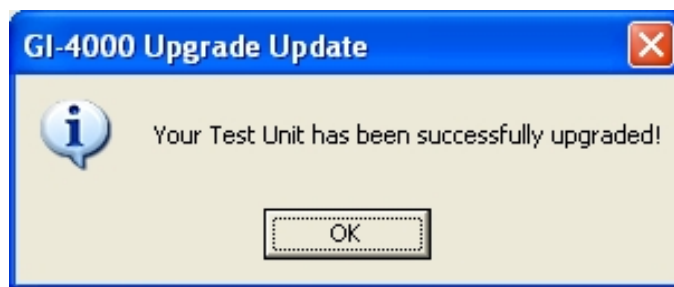
Select the correct communication port for your PC and Click on the Update button to begin the update. As the update program begins, you should see the following on your GI-4000 display;



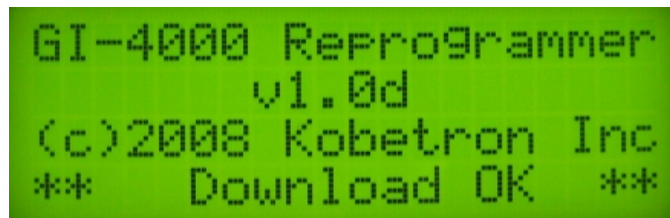
Upgrading the GI-4000 Software - 03/27/09



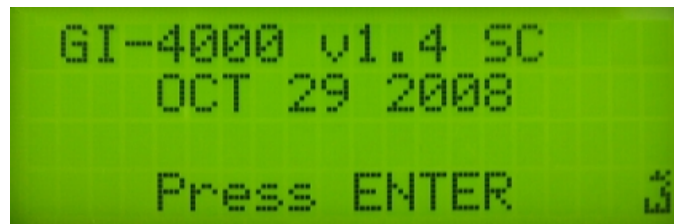
When the update program is finished, you should get the following messages on your PC, indicating that your unit was successfully upgraded;



The following message should be momentarily displayed on your GI-4000, indicating the download completed successfully;



After the above message is temporarily displayed, the GI-4000 should reset itself and display the version and date of the software you just downloaded. If it does not reset itself, simply turn the unit off and back on again.



This completes the update process. You can now close down the Update Utility program on your PC and disconnect the serial cable connected between your PC and the GI-4000.